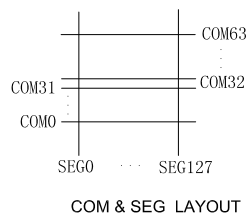
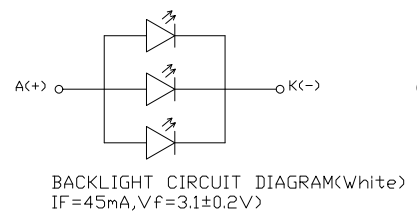
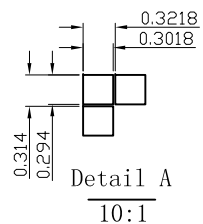


PIN ASSIGNMENT

No	Symbol
1	TG_IN_1
2	TG_OUT_1
3	LED_A
4	LED_K
5	VG
6	XV0
7	VO
8	VSS
9	VDD
10	D7 (SDA)
11	D6 (SCL)
12	AO
13	RSTB
14	CSB
15	TG_IN_2
16	TG_OUT_2

- NOTE:
1. GENERAL TOLERANCE: ±0.20.
 2. (...) IS REFERENCE DIMENSION.
 3. * CRITICAL DIMENSION
 4. RoHS COMPLIANT



Display Type	FSTN
	POSITIVE
	TRANSFLECTIVE
Front Polarizer	
Operating Method	1/65 DUTY, 1/9 BIAS
Viewing Angle	6 O'CLOCK
LCD Driver IC	ST7567
Operating Voltage	Vop=9.0V
Driver Voltage	VDD=3.0V
Operation Temperature	-20°C TO 70°C
Storage Temperature	-30°C TO 80°C
Interface	SERIAL, 4-SPI
Backlight	IF=45mA, Vf=3.1±0.2V

VER.	SYMBOL	AMENDMENT	SIGN	DATE	CUSTOMER'S APPROVAL	DRAWN	ZC	TITLE	DRAWING NO.			
01		first issue	ZC	14.10.14				MODULE SPEC.	STR-TG9158A			
									UNIT	mm	SCALE	FIT
									3rd Angle	⊕		SHEET 1 OF 1
									TRUEVISION TECHNOLOGIES LTD			