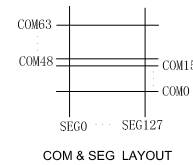
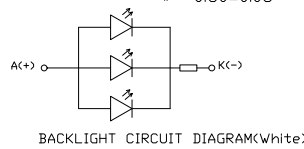
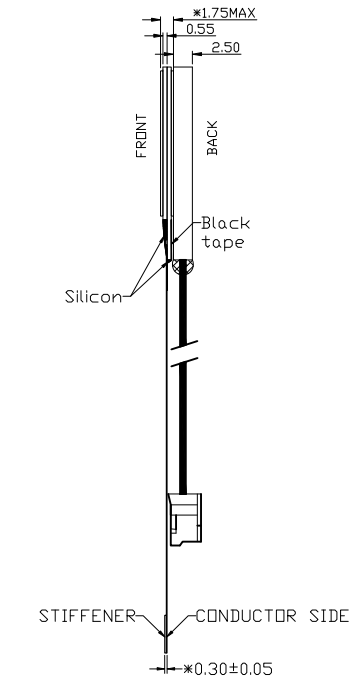
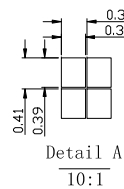


NOTE:

1. GENERAL TOLERANCE: ±0.20.
2. (...) IS REFERENCE DIMENSION.
3. * CRITICAL DIMENSION
4. RoHS COMPLIANT



PIN ASSIGNMENT

No	Symbol	No	Symbol
1	/CS	15	NC
2	/RST	16	NC
3	A0	17	NC
4	/WR	18	NC
5	/RD	19	NC
6	D0	20	NC
7	D1	21	NC
8	D2	22	NC
9	D3	23	NC
10	D4	24	NC
11	D5	25	V0
12	D6	26	C86
13	D7	27	P/S
14	VSS	28	VDD

Display Type	FSTN
Front Polarizer	POSITIVE
Operating Method	TRANSFLECTIVE
Viewing Angle	1/33 DUTY, 1/6 BIAS
LCD Driver IC	6 O'CLOCK
Operating Voltage	IST3080CA1
Driver Voltage	Vop=7.6V
Backlight	VDD=3.3V
Operation Temperature	-10°C TO 60°C
Storage Temperature	-20°C TO 70°C
Interface	W Vfr=3.3V, IF=45mA TYPE

				DRAWN	ZC	TITLE	DRAWING NO.			
				EE.CHECKED	TJP	MODULE SPEC.	STR-TG9319			
				ME.CHECKED	TJP		UNIT	mm	SCALE	FIT
				APPROVED	HJB		3rd Angle		SHEET	1 OF 1
01		First issue		ZC	14.07.24	BOM NO.: BM140719-01A				
VER.	SYMBOL	AMENDMENT		SIGN	DATE	CUSTOMER'S APPROVAL	TRUEVISION TECHNOLOGIES LTD			